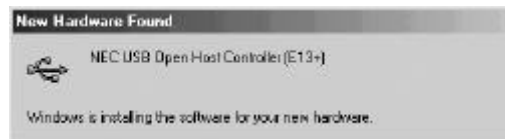


## ■ Install drivers in Windows ME

The USB 2.0 PCI card has 3 USB host controller engines in the chip. Two of the Open Host Controller engines handle USB 1.1 transactions. One of the Enhanced Host Controller engine handles the USB 2.0 Hi-speed transactions.

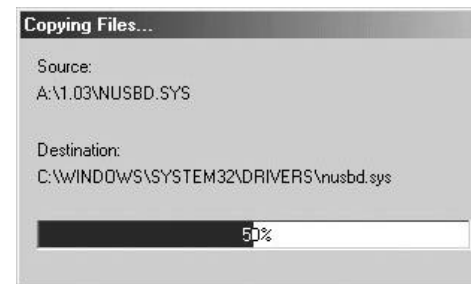
1. Once the card is installed and the computer is restarted, Windows will detect the PCI card and installing the drivers for “**NEC USB Open Host Controller**”, automatically two times.



2. Then Windows will find a "PCI Universal Serial Bus", select the “**Automatic search for a better driver.**” button and **insert the EHCI driver diskette** that come with the package into your floppy drive. Click "Next".



3. Windows is copying file to your system.



4. The next dialog will let you know the driver has completed loading. Click "Finish" to finalize the installation.



5. A "System Settings Change" dialog may appear, suggesting you "Restart your computer now".

**Note:**

All the driver installation steps may be a little different from this guide when you had been installed this card before or using different version of OS. and hardware, in this situation please follow the Windows prompt steps to complete the installation procedure.

**■Verify if PCI card has properly installed**

To confirm that the USB 2.0 Hi-speed PCI card has been correctly installed, check your Device Manager on the Windows system. You should see an entry titled **“Universal Serial Bus Controller”** click on the “+” sign for next sub- entry should reveal the following added readings:

**NEC PCI to USB Enhanced Host Controller**  
**NEC PCI to USB Open Host Controller**  
**NEC PCI to USB Open Host Controller**  
**USB Root Hub**  
**USB Root Hub**

